



# ELEVEX



## The vertical platformlift for lifting heights up to 1830mm

The Elevex is a vertical platform lift designed for low-rise travel indoors or outdoors. With its durable design, the Elevex is popular for accessing decks and porches even in demanding climates and is ideal for outdoor use in public and private buildings.

At the heart of the Elevex is the reliable operation of the ACME screw drive which delivers precision movement and performance you can count on day after day. Handling up to 340kg this lift can carry a passenger in a wheelchair with ease. An array of safety features ensures safe operation including sensors to stop the lift if it senses an obstruction. The Elevex is an easy and economic way to add access for low-rise travel.



**Robust design** for installation in any climate

**Free standing drive tower** for ease of installation



**LEHNER**  
LIFTTECHNIK

# ELEVEX

## Free-standing

The free-standing drive tower permits a fast and simple installation with only minimum constructual works required on site.

## Quality and safety

CE approved! Fulfills highest safety standards and is built in conformity with the European machinery directive.

## Reliable

Especially designed for outside installation, the screw drive and the robust electrics provide for a safe drive and a low-maintenance operation.

**Side exit** on upper level and access ramp on the platform



The EleveX vertical platform lift



## Main advantages of the EleveX platformlift

- Up to 1830mm lifting height
- Smooth and stable drive
- Free standing drive tower, fixing only below the platform floor
- Drive tower to be mounted in 1 piece for a fast and simple installation
- Reliable and safe ACME screw drive
- With or without upper landing gate
- With automatic access ramp
- Entry-exit on same side or at 90°





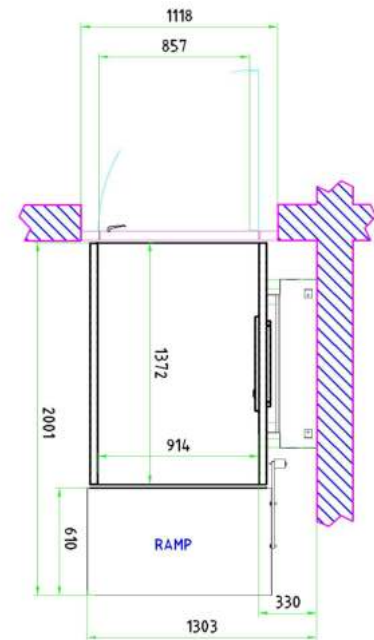
Upper gate **integrated into balustrade**



Upper gate with **plexiglass insert**

### EleveX - Technical Specification

Loading capacity	340 kg
Lifting height	1830 mm
Standard platform size	914 x 1372 mm
Drive system	ACME screw drive
Lifting speed	0,11 m/s
Min. platform height	70 mm
Standard colour	Light grey
Noise level	Under 60dB
Temperature range	+45°C down to -30°C
Drive motor	0,75 kW
Power supply	1x230V / 50-60Hz
Conformity	CE according to MD 2006/42/EC



## Together we provide accessibility!

For further information please contact:



Platform stairlifts



Chair stairlifts



Vertical platformlifts



Stairclimbers



Poollifts

Official  
partner of:

**LEHNER**  
LIFTTECHNIK